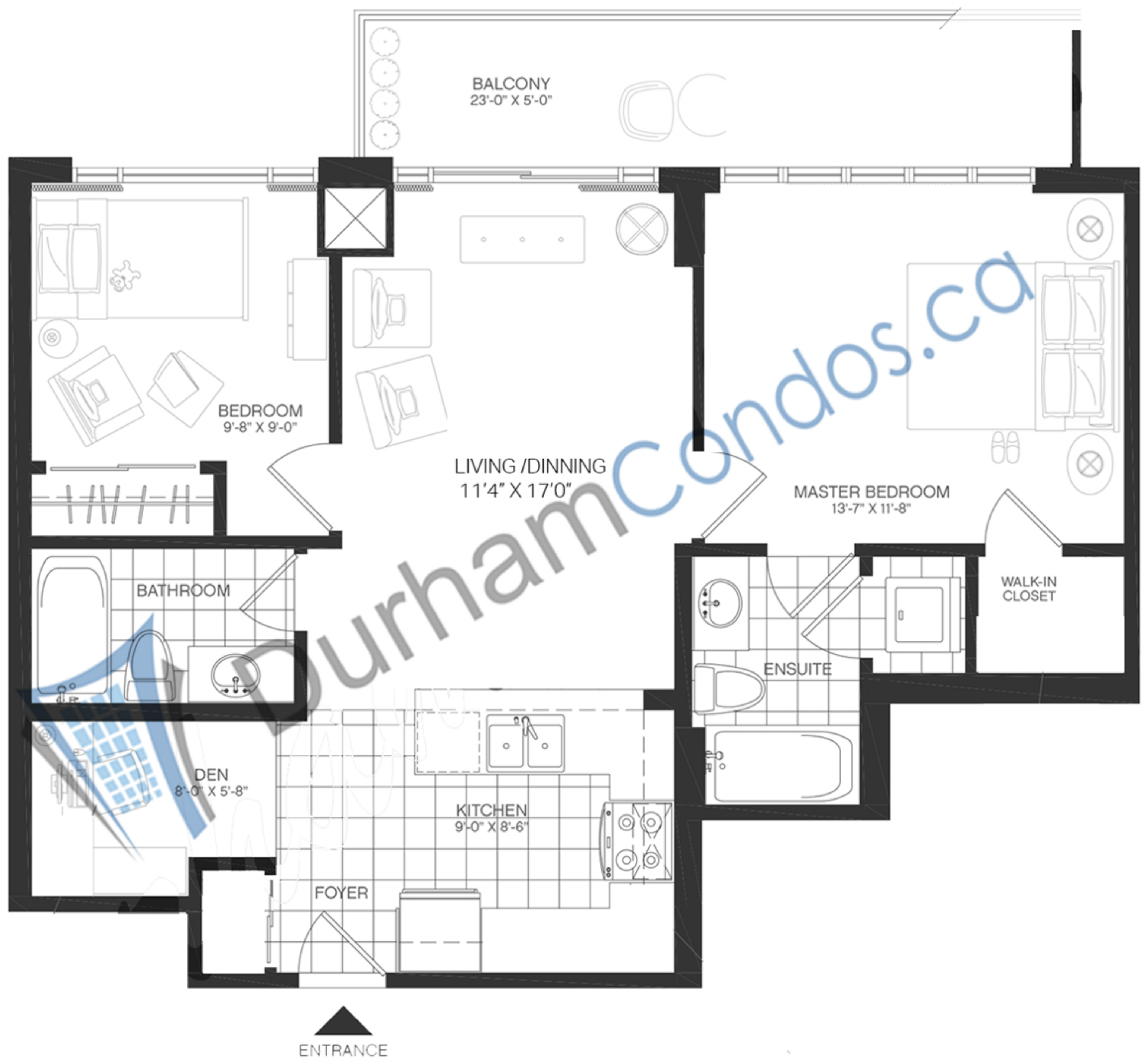


1600 Charles St., - The Rowe
PORTSMOUTH

952 SQFT
including 117 SQFT OUTDOOR
2 BEDROOM +DEN+2 BATHROOM



DurhamCondos.ca

All floorplan measurements, scale and item placements, are deemed reliable but not guaranteed and are for informational purposes only. Neither Mike Bouma, RE/MAX JAZZ Inc., Brokerage nor durhamcondos.ca shall be responsible for any errors herein.